

Press release

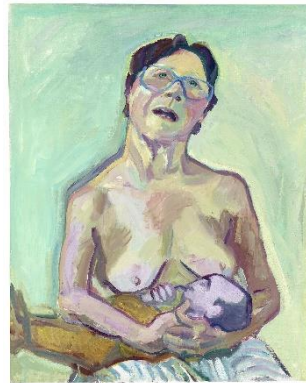
Shared rooms Capturing cosiness

16 05 – 2 11 2025

On May 16, the Permeke Museum in Jabbeke opens the exhibition *Shared Rooms. Capturing cosiness*.

The title refers to a house full of rooms that you share with your family, blood relatives, or a chosen family. Such a place can symbolize peace and security, but also underlying tension or love. The human longing for connection takes many forms and continues to inspire artists today. This exhibition brings together works by Constant Permeke and a selection of national and international contemporary artists, each exploring this theme in their own way.

Maria Lassnig. SABAM Belgium 2025



The artist Constant Permeke drew and painted his family and the people around him unadorned. Parenthood, couples and domestic intimacy are themes he loved to depict. His family life was close to his heart. Together with his wife, Marietje, he had six children, two of whom died at a young age. Togetherness, warmth and domesticity are woven into his works of art. But also raw loss and loneliness.

He explored the human and 'the essential', what connects people with each other. Through his dark palette, Permeke allowed light to shine on fundamental elements. Expression and distortions serve a higher purpose: to reveal people's psychological makeup and the way in which they are connected with each other. Often he combined drawing and painting. With the solid materiality of thickly applied paint, smudged charcoal and thinned turpentine, he strove for

spiritualization. The colossal figures with subdued poses seem resigned to life. They resonate with vibrant, raw energy, but also exude melancholy, tenderness, surrender, understanding and devotion.

The search for connection is peculiar to man and has many faces. It is a topic that does not fail to move artists today as well. Some international contemporary artists invite critical reflection on the theme. As a 'painter of the people', as she once described herself, the American **Alice Neel** (1900-1984) is a keen observer of human relationships and social inequality. Like Permeke, she painted figures from her surroundings: family and friends as well as people on the margins of society. She portrays a non-idealised image of parenthood lacking in tenderness. The Austrian **Maria Lassnig** (1919-2014) also depicts unadorned, raw scenes from everyday life of couples and families. Her experience starts from her own physicality. The Belgian **Anne Daems** (1966) searches for a connection with her father in the series 'My Father's Garden'. For her, the garden is a harmonious refuge from the frenetic pace of society, a place where she finds connection with her family. The series of portraits painted by the Belgian artist **Birde Vanheerswynghels** (1986) depict the vulnerability of her own 'chosen family' and queer community.

**permeke
museum**

ALL INFO

permekemuseum.be

info@permekemuseum.be

Wednesday to Monday: from 10:00 AM to 5:30 PM (closed on Tuesdays)

PRESS

Press material available at permekemuseum.be/press

Contact: pers@muzee.be

With the support of

Structural partner: Delen Private Bank

Government support: Toerisme Vlaanderen | Vlaanderen Cultuur

The artists' houses

Permekemuseum in Jabbeke and Peiremuzee in Knokke-Heist
are part of Mu.ZEE, Ostend